



**LINEPROOF**<sup>®</sup>  
ENGINEERING INDIA PVT. LTD.



## **SERIES LP83N**



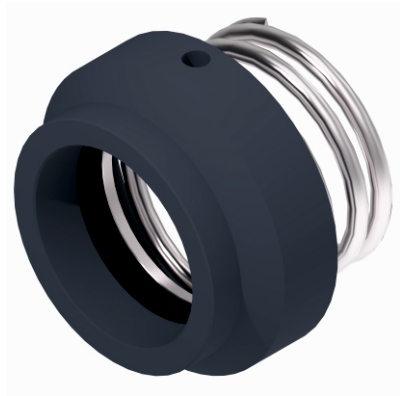
*we are loyal to our customers...*

[www.lineproofengg.com](http://www.lineproofengg.com)



## SERIES LP83N

### Mechanical Seals / Mechanical Seals for Pump / Pusher Mechanical Seal



#### STANDARD STYLE

#### FACE MATERIAL

Carbon graphite

#### METAL PARTS

SS 316, SS 304,

#### SECONDARY SEAL

EPDM, NBR, FKM, FFKM

#### APPLICATION

- Chemical industry
- Pulp and paper industry
- Water and waste water technology
- Building services industry
- Food and beverage industry
- Sugar industry
- Low solids content media
- Water and sewage water pumps
- Submersible pumps
- Chemical standard pumps
- Eccentric screw pumps
- Cooling water pumps
- Basic sterile applications

#### SEAL CHARACTERISTICS

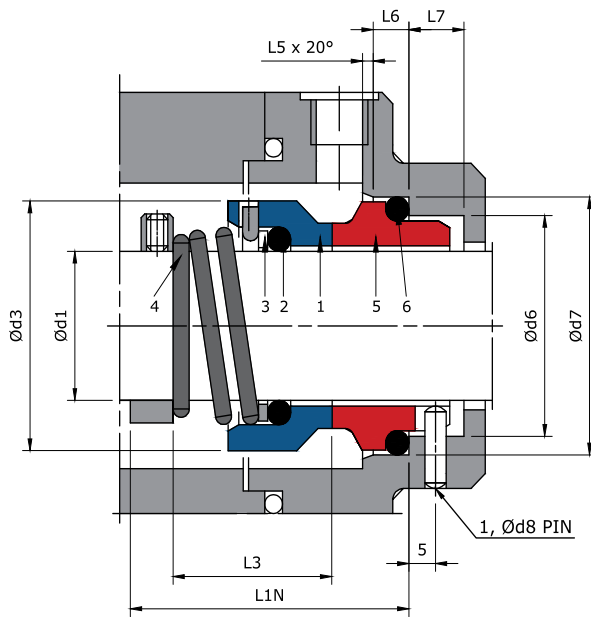
- For plain shafts
- Single seal
- Unbalanced
- Rotating conical spring
- Dependent on direction of rotation

#### OPERATING LIMIT

Shaft Diameter d1 : 6mm...80mm  
Pressure p : 10 bar (max)  
Temperature t : -20 + 140°C  
Velocity v : 15 m/sec



# SERIES LP83N



PART NO.	DESCRIPTION
1	SEAL FACE
2	O-RING
3	THRUST RING
4	RIGHT HAND SPRING
5	LEFT HAND SPRING
6	O-RING

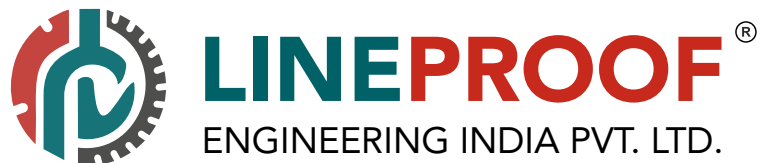
SEAL SIZE +0.00 d1-0.05	d3	d6	d7	d8	L3	L5	L6	L7	L1N
mm									
12.0	21.0	19.0	23.0	3.0	16.0	1.5	4.0	8.5	40.0
14.0	23.0	21.0	25.0	3.0	16.5	1.5	4.0	8.5	40.0
15.0	24.0	-	-	-	-	-	-	-	-
16.0	26.0	23.0	27.0	3.0	18.0	1.5	4.0	8.5	40.0
18.0	29.0	27.0	33.0	3.0	19.5	2.0	5.0	9.0	45.0
20.0	31.0	29.0	35.0	3.0	22.0	2.0	5.0	9.0	45.0
22.0	33.0	31.0	37.0	3.0	21.5	2.0	5.0	9.0	45.0
24.0	35.0	33.0	39.0	3.0	23.5	2.0	5.0	9.0	50.0
25.0	36.0	34.0	40.0	3.0	26.5	2.0	5.0	9.0	50.0
26.0	37.0	-	-	-	-	-	-	9.0	-
28.0	40.0	37.0	43.0	3.0	26.5	2.0	5.0	9.0	50.0
30.0	43.0	39.0	45.0	3.0	26.5	2.0	5.0	9.0	50.0
32.0	46.0	42.0	48.0	3.0	28.5	2.0	5.0	9.0	55.0
33.0	47.0	42.0	48.0	3.0	28.5	2.0	5.0	9.0	55.0
35.0	49.0	44.0	50.0	3.0	28.5	2.0	5.0	9.0	55.0
38.0	53.0	49.0	56.0	4.0	33.5	2.0	6.0	9.0	55.0
40.0	56.0	51.0	58.0	4.0	36.0	2.0	6.0	9.0	55.0
42.0	59.0	-	-	-	-	-	-	9.0	-
43.0	59.0	54.0	61.0	4.0	38.5	2.0	6.0	9.0	60.0
45.0	61.0	56.0	63.0	4.0	39.5	2.0	6.0	9.0	60.0
48.0	64.0	59.0	66.0	4.0	46.0	2.0	6.0	9.0	60.0
50.0	66.0	62.0	70.0	4.0	45.0	2.5	6.0	9.0	60.0
53.0	69.0	65.0	73.0	4.0	47.0	2.5	6.0	9.0	70.0
55.0	71.0	67.0	75.0	4.0	49.0	2.5	6.0	9.0	70.0
58.0	76.0	70.0	78.0	4.0	55.0	2.5	6.0	9.0	70.0
60.0	78.0	72.0	80.0	4.0	55.0	2.5	6.0	9.0	70.0
63.0	83.0	75.0	83.0	4.0	55.0	2.5	6.0	9.0	70.0
65.0	84.0	77.0	85.0	4.0	55.0	2.5	6.0	9.0	80.0
68.0	88.0	81.0	90.0	4.0	55.0	2.5	7.0	9.0	80.0
70.0	90.0	83.0	92.0	4.0	57.0	2.5	7.0	9.0	80.0
75.0	98.0	88.0	97.0	4.0	62.0	2.5	7.0	9.0	80.0
80.0	100.0	95.0	105.0	4.0	61.8	3.0	7.0	9.0	90.0



Follow us on



[www.lineproofengg.com](http://www.lineproofengg.com)



 **VASAI, Maharashtra, INDIA.**

 **For Enquiries**  
[sales.er@lineproofengg.com](mailto:sales.er@lineproofengg.com)  
[lineproofengg@gmail.com](mailto:lineproofengg@gmail.com)

 **For Suggestions / Feedback**  
[info@lineproofengg.com](mailto:info@lineproofengg.com)

 **Contact No.**  
+91 9726057335  
+91 9819013772

*we are loyal to our customers...*

[www.lineproofengg.com](http://www.lineproofengg.com)