



LINEPROOF[®]
ENGINEERING INDIA PVT. LTD.



SERIES LP360



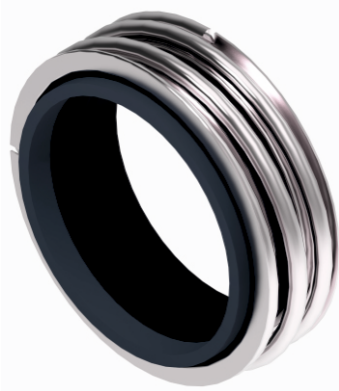
we are loyal to our customers...

www.lineproofengg.com



SERIES LP360

Mechanical Seals / Mechanical Seals for Pump / Elastomer Bellow Seals Mechanical Seal



STANDARD STYLE

FACE MATERIAL

Carbon graphite antimony impregnated,
Carbon graphite resin impregnated,
Silicon carbide, Tungsten carbide,

METAL PARTS

SS 316, SS 304

SECONDARY SEAL

NBR, EPDM, FKM, HNBR

APPLICATION

- Process industry
- Chemical industry
- Pulp and paper industry
- Water and waste water technology
- Food and beverage industry
- Sugar industry
- Oil applications
- Water, waste water, slurries (up to 5 % by weight)
- Pulp (up to 4 % otro)
- Latex
- Dairies, beverages
- Sulfide slurries
- Chemicals
- Oils
- Chemical standard pumps
- Helical screw pumps
- Stock pumps
- Circulating pumps
- Submersible pumps
- Water and waste water pumps

SEAL CHARACTERISTICS

- For plain shafts
- Single and dual seal
- Elastomer bellows rotating
- Unbalanced
- Independent of direction of rotation
- No torsion on bellows

OPERATING LIMIT

Shaft Diameter	d1	: 10mm...100mm
Pressure	p	: 16 bar
Temperature	t	: -20 +140°C
Velocity	v	: 10 m/sec

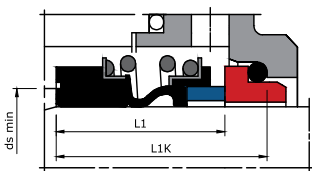
Product variants

LP362
Dimensions, items and designations same as for LP362, but with an extended bellows tail to achieve the fitting length I1k according to EN 12756 in combination with seat G6 or G60 (da exceeds EN 12756).

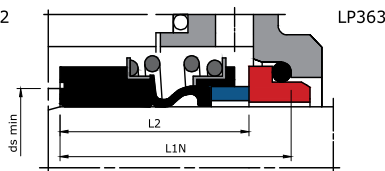
LP364
Dimensions, items and designations same as for LP364, but with an extended bellows tail to achieve the special fitting length I1S in combination with seat G50.

LP363
Dimensions, items and designations same as for LP363, but with an extended bellows tail to achieve the fitting length I1N according to EN 12756 in combination with seat G6 or G60 (da exceeds EN 12756).

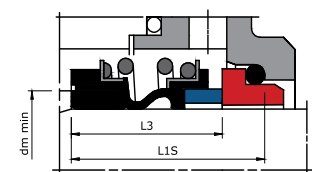
LP362
Identical to LP362, but with a special bellows surface on the shaft side. For use in hot water pumps up to 120 °C (248 °F) and 25 bar (363 ft/s) or 140 °C (284 °F) and 16 bar (232 PSI). Only in combination with seat G606 (d1 = 12 ... 38 mm) (0.47" ... 1.50").
Seal face: Tungsten Carbide (U3)
Seat G606: Carbon graphite resin impregnated (B)



LP362



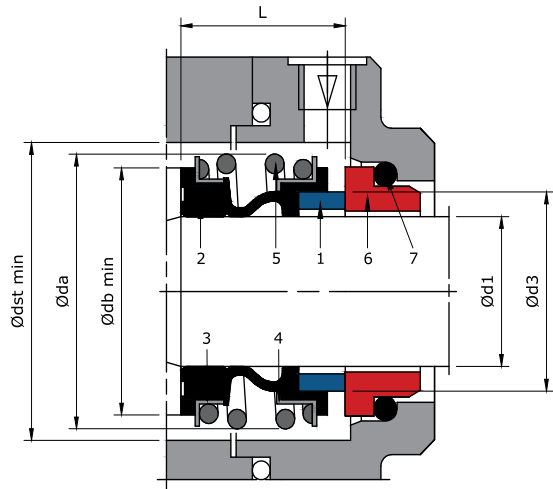
LP363



LP364



SERIES LP360



PART NO.	DESCRIPTION
1	SEAL FACE
2	BELLOWS
3	"L"-RING (SPRING COLLAR)
4	"L"-RING (SPRING COLLAR)
5	SPRING
6	SEAT
7	O-RING OR RUBBER CUP

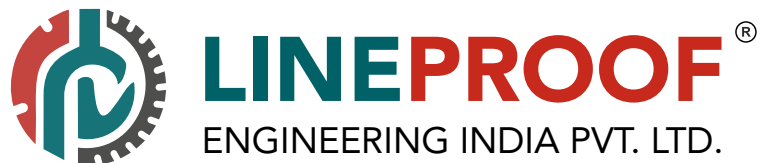
SEAL SIZE +0.00 d1-0.05	d3	da	db	dm	ds	dst	L	L1	L1K	L1N	L1S	L2	L3
mm													
10.0	15.7	22.5	20.5	18.0	18.0	24.0	14.5	25.9	32.5	40.0	34.0	33.4	25.0
12.0	17.7	25.0	22.5	20.0	20.0	26.0	15.0	26.9	32.5	40.0	34.0	33.4	25.0
14.0	19.7	28.5	26.5	22.0	22.0	30.0	17.0	28.4	35.0	40.0	35.5	33.4	25.0
15.0	20.8	28.5	26.5	22.0	22.0	30.0	17.0	28.4	-	-	35.5	33.4	25.0
16.0	21.0	28.5	26.5	22.0	22.0	30.0	17.0	28.4	35.0	40.0	35.5	33.4	25.0
18.0	23.7	32.0	29.0	29.0	26.0	33.0	19.5	30.0	37.5	45.0	35.5	37.5	25.0
19.0	26.7	37.0	33.0	33.0	28.0	38.0	21.5	30.0	-	-	35.5	37.5	25.0
20.0	26.7	37.0	33.0	33.0	28.0	38.0	21.5	30.0	37.5	45.0	35.5	37.5	25.0
22.0	27.7	37.0	33.0	33.0	28.0	38.0	21.5	30.0	37.5	45.0	35.5	37.5	25.0
24.0	31.2	42.5	38.0	38.0	32.0	44.0	22.5	32.5	40.0	50.0	35.5	42.5	25.0
25.0	31.2	42.5	38.0	38.0	32.0	44.0	23.0	32.5	40.0	50.0	35.5	42.5	25.0
28.0	35.0	49.0	44.0	37.0	37.0	50.0	26.5	35.0	42.5	50.0	45.0	42.5	33.0
30.0	37.0	49.0	44.0	37.0	37.0	50.0	26.5	35.0	42.5	50.0	45.0	42.5	33.0
32.0	40.2	53.5	46.0	41.0	41.0	55.0	27.5	35.0	42.5	55.0	45.0	47.5	33.0
33.0	40.2	53.5	46.0	41.0	41.0	55.0	27.5	35.0	42.5	55.0	45.0	47.5	33.0
35.0	43.2	57.0	50.0	44.0	44.0	59.0	28.5	35.0	42.5	55.0	45.0	47.5	33.0
38.0	46.2	59.0	53.0	53.0	47.0	61.0	30.0	36.0	45.0	55.0	45.0	46.0	33.0
40.0	48.8	62.0	55.0	55.0	49.0	64.0	30.0	36.0	45.0	55.0	45.0	46.0	33.0
42.0	51.8	65.5	58.0	53.0	53.0	67.0	30.0	36.0	-	-	53.0	51.0	41.0
43.0	51.8	65.5	58.0	53.0	53.0	67.0	30.0	36.0	45.0	60.0	53.0	51.0	41.0
45.0	53.8	68.0	60.0	55.0	55.0	70.0	30.0	36.0	45.0	60.0	53.0	51.0	41.0
48.0	56.8	70.5	63.0	58.0	58.0	74.0	30.5	36.0	45.0	60.0	53.0	51.0	41.0
50.0	58.8	74.0	65.0	60.0	60.0	77.0	30.5	38.0	47.5	60.0	54.5	50.5	41.0
53.0	62.2	78.5	70.0	63.0	63.0	81.0	33.0	36.5	47.5	70.0	54.5	59.0	41.0
55.0	64.2	81.0	72.0	65.0	65.0	83.0	35.0	36.5	47.5	70.0	54.5	59.0	41.0
58.0	67.2	85.5	75.0	68.0	68.0	88.0	37.0	41.5	52.5	70.0	54.5	59.0	41.0
60.0	70.0	88.5	79.0	70.0	70.0	91.0	38.0	41.5	52.5	70.0	54.5	59.0	41.0
65.0	75.0	93.5	84.0	77.0	77.0	96.0	40.0	41.5	52.5	80.0	65.0	69.0	49.0
68.0	78.0	96.5	88.0	80.0	80.0	100.0	40.0	41.2	52.5	80.0	65.0	68.7	49.0
70.0	80.0	99.5	90.0	82.0	82.0	103.0	40.0	48.7	60.0	80.0	65.0	68.7	49.0
75.0	85.5	107.0	95.0	87.0	87.0	110.0	40.0	48.7	60.0	80.0	68.0	68.7	52.0
80.0	90.5	112.0	100.0	92.0	92.0	116.0	40.0	48.0	60.0	90.0	76.0	78.0	56.0
85.0	96.0	120.0	107.0	97.0	97.0	124.0	41.0	46.0	60.0	90.0	76.0	76.0	56.0
90.0	102.0	127.0	114.0	104.0	104.0	131.0	45.0	51.0	65.0	90.0	79.0	76.0	59.0
95.0	107.0	132.0	119.0	109.0	109.0	136.0	46.0	51.0	65.0	90.0	79.0	76.0	59.0
100.0	112.0	137.0	124.0	114.0	114.0	140.0	47.0	51.0	65.0	90.0	82.0	76.0	62.0



Follow us on



www.lineproofengg.com



 **VASAI, Maharashtra, INDIA.**

 **For Enquiries**
sales.er@lineproofengg.com
lineproofengg@gmail.com

 **For Suggestions / Feedback**
info@lineproofengg.com

 **Contact No.**
+91 9726057335
+91 9819013772

we are loyal to our customers...

www.lineproofengg.com