



LINEPROOF[®]
ENGINEERING INDIA PVT. LTD.



SERIES LP330



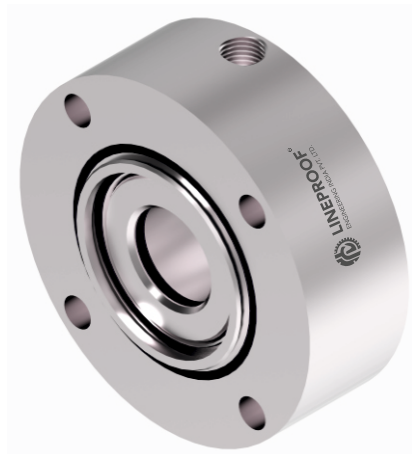
we are loyal to our customers...

www.lineproofengg.com



SERIES LP330

Mechanical Seals / Mechanical Seals for Pump / Standard Cartridge Seals Mechanical Seal



STANDARD STYLE

FACE MATERIAL

Blister resistant carbon,
Silicon carbide SSiC

METAL PARTS

SS 316, SS 304

SECONDARY SEAL

EPDM, NBR, FKM, FFKM

SEAL CHARACTERISTICS

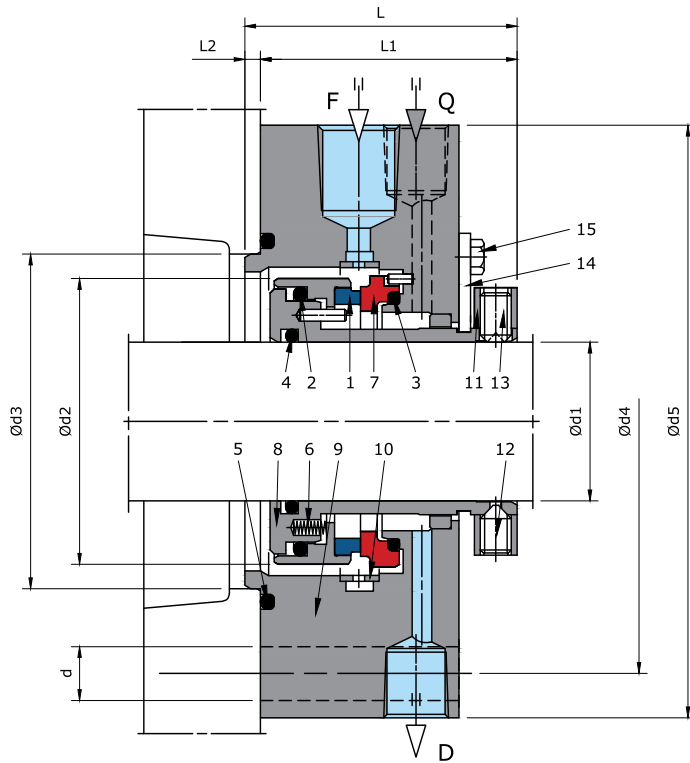
- Single seal
- Cartridge unit
- Category 1, Type A, Arrangement 1
- Balanced
- Independent direction of rotation
- Shrink-fitted seal faces
- Solid mating ring

APPLICATION

- Process industry
- Oil and gas industry
- Refining technology
- Petrochemical industry
- Chemical industry
- Highly volatile hydrocarbons
- Toxic and hazardous media
- Media with poor lubrication properties
- Low solids content and low abrasive media
- Vertical and horizontal ANSI chemical standard pumps

OPERATING LIMIT

Shaft Diameter	d1	: 20mm...110mm
Pressure	p	: 22 bar
Temperature	t	: -40 +176°C
Velocity	v	: 23 m/sec



PART NO.	DESCRIPTION
1	SEAL RING
2	O-RING
3	O-RING
4	O-RING
5	O-RING
6	SPRING
7	MATING RING
8	SEAL SLEEVE
9	GLAND PLATE
10	FLOW DISTRIBUTOR
11	SET RING
12	SET SCREW
13	SET SCREW
14	SETTING DEVICE
15	HEXAGON BOLT

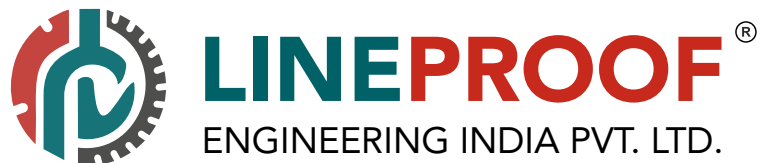
SEAL SIZE +0.00 d1-0.05	d2	d3	d4	d5	L	L1	L2	d	Qty.
mm									
20.0	50.4	58.0	105.0	127.0	70.5	66.5	4.0	13.5	4.0
25.0	55.4	63.0	110.0	132.0	70.5	66.5	4.0	13.5	4.0
30.0	60.4	68.0	115.0	137.0	70.5	66.5	4.0	13.5	4.0
35.0	65.4	73.0	120.0	142.0	70.5	66.5	4.0	13.5	4.0
40.0	70.4	78.0	125.0	147.0	70.5	66.5	4.0	13.5	4.0
45.0	75.4	83.0	135.0	162.0	70.5	66.5	4.0	17.5	4.0
50.0	80.4	88.0	140.0	167.0	72.5	68.5	4.0	17.5	4.0
55.0	85.4	93.0	145.0	172.0	72.5	68.5	4.0	17.5	4.0
60.0	96.0	105.0	160.0	187.0	87.0	83.0	4.0	17.5	4.0
65.0	101.0	110.0	165.0	192.0	87.0	83.0	4.0	17.5	4.0
70.0	106.0	115.0	170.0	197.0	87.0	83.0	4.0	17.5	4.0
75.0	111.0	120.0	175.0	202.0	87.0	83.0	4.0	17.5	4.0
80.0	116.0	125.0	185.0	218.0	87.0	83.0	4.0	22.0	4.0
85.0	123.5	136.0	190.0	223.0	86.0	71.5	14.5	22.0	4.0
90.0	128.5	141.0	195.0	228.0	86.0	71.5	14.5	22.0	4.0
95.0	133.5	146.0	200.0	233.0	86.0	71.5	14.5	22.0	4.0
100.0	138.5	151.0	205.0	238.0	86.0	71.5	14.5	22.0	4.0
105.0	143.5	156.0	210.0	243.0	86.0	71.5	14.5	22.0	4.0
110.0	152.5	161.0	215.0	248.0	86.0	71.5	14.5	22.0	4.0



Follow us on



www.lineproofengg.com



 **VASAI, Maharashtra, INDIA.**

 **For Enquiries**
sales.er@lineproofengg.com
lineproofengg@gmail.com

 **For Suggestions / Feedback**
info@lineproofengg.com

 **Contact No.**
+91 9726057335
+91 9819013772

we are loyal to our customers...

www.lineproofengg.com